



Variable Speed Drive **MAS2** for 1...4 Pumps

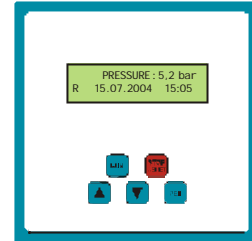
The MAS2 pump control system is used for the regulation/control of pumps and motors. A frequency inverter system with PI controller is used to achieve exact and extremely fast adaptation to changing operating conditions. The pressure transducer (0-10V) gives a feedback signal. It can be monitored directly on the **text display**. All parameters can be displayed/set by a menu. The system is parameterized at the factory.

Quick info:

- 1...4 Pumps
- 0,75 ... 2,2 kW 230V~
- 0,75 ... 7,5 kW 400V 3~
- Text display
- Steel enclosure IP54
- 0..10V transducer

Applications:

- Booster sets
- Rain systems
- Cooling systems
- Filtration
- Water level control

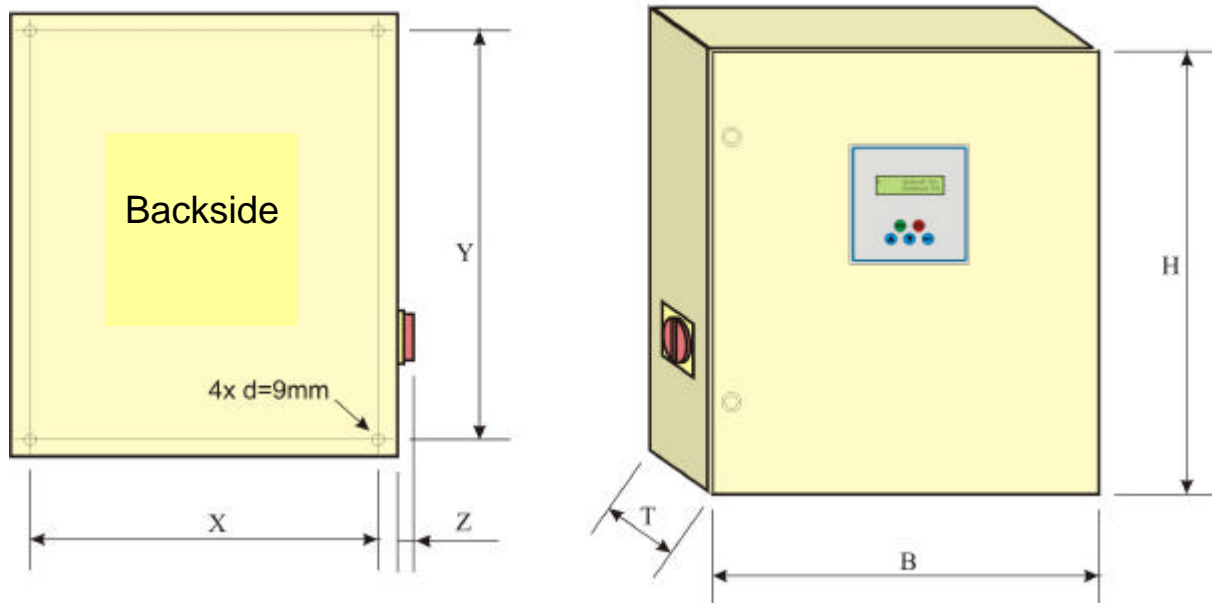


Features of the MAH variable speed drive:

- Capacities: 0,75kW ... 2,2kW/ 230V 50/60Hz / 0,75kW ... 4,0kW/ 400V 50/60Hz
- Variable speed drive for 1...4 pump operation; one inverter for each pump
- Fully programmable frequency inverter system
- Connection for pressure transducer 0..10V
- PI-control for
 - well-balanced regulation
 - minimum pressure fluctuation
 - very fast adjustment to sudden pressure fluctuation
- Water-stagnation-identification
 - switch to stand-by-mode if no water is demanded
 - programmable start pressure to have no pump creeping
- Feedback pressure check
 - adjustable
 - to switch off pump in case of deviation (alarm message)
 - can be used for dry running protection, water overload, over pressure
- Transducer check
 - in case of transducer failure an alarm occurs
 - fix speed running can be started immediately
- Automatic RUN
 - if this function is selected the unit starts operating after power is switched on
- Duty/Assist operation
 - automatic pump switch over depending on working hours
 - switch over in case of failure
- 2 transducers on double pump systems possible (each pump 1 transducer)
- Fix speed operation with programmable frequency
- Ventilation fan is temperature controlled
- External inputs
 - terminal run, terminal reset, target pressure switch over, float switch, PTC, ...
- External outputs
 - volt free contacts (com., n.c., n.o.)
 - programmable for alarm, pump run, ...
- Programmable leakage control
- Programmable 24-h-run
- Programmable start pressure
- Programmable running time control
- Clock
- 10 trip history monitor
- Hours run counter
- Text display for: Pressure, target pressure, motor current, speed, ...
- Steel enclosure IP54 (RAL 7032)
- Main isolator
- Fuse
- Radio noise filter (for buildings)

MAS2

Dimensions for Variable speed drive **MAS2**



Type	Capacity	H (mm)	B (mm)	T (mm)	Z (mm)	X (mm)	Y (mm)	Wight
1 pump panels								
MAS2-075E	0,75 kW	300	300	210	35	260	260	35 kg
MAS2-110E ... MAS2-220E	1,1 ... 2,2 kW	400	300	210	35	360	260	35 kg
MAS2-075D	0,75 kW	300	300	210	35	260	260	35 kg
MAS2-150D ... MAS2-400D	1,5 ... 4,0 kW	400	300	210	35	360	260	35 kg
MAS2-550D ... MAS2-750D	5,5 ... 7,5 kW	400	400	210	50	360	360	40 kg
2 pump panels								
MAS2-075E	0,75 kW	400	400	210	50	360	360	60 kg
MAS2-110E ... MAS2-220E	1,1 ... 2,2 kW	400	400	210	50	360	360	60 kg
MAS2-075D	0,75 kW	400	400	210	50	360	360	60 kg
MAS2-150D ... MAS2-400D	1,5 ... 4,0 kW	400	400	210	50	360	360	60 kg
MAS2-550D ... MAS2-750D	5,5 ... 7,5 kW	600	500	260	50	560	460	60 kg
3 pump panels								
MAS2-075E	0,75 kW	400	500	210	50	360	460	60 kg
MAS2-110E ... MAS2-220E	1,1 ... 2,2 kW	500	400	260	50	460	360	60 kg
MAS2-075D	0,75 kW	400	500	210	50	360	460	60 kg
MAS2-150D ... MAS2-400D	1,5 ... 4,0 kW	500	400	260	50	460	360	60 kg
MAS2-550D ... MAS2-750D	5,5 ... 7,5 kW	600	600	300	70	560	560	80 kg
4 pump panels								
MAS2-075E	0,75 kW	400	600	210	50	360	560	80 kg
MAS2-110E ... MAS2-220E	1,1 ... 2,2 kW	600	400	260	50	560	360	80 kg
MAS2-075D	0,75 kW	400	600	210	50	360	560	80 kg
MAS2-150D ... MAS2-400D	1,5 ... 4,0 kW	600	400	260	50	560	360	80 kg
MAS2-550D ... MAS2-750D	5,5 ... 7,5 kW	800	600	300	70	760	560	100 kg

MAS2